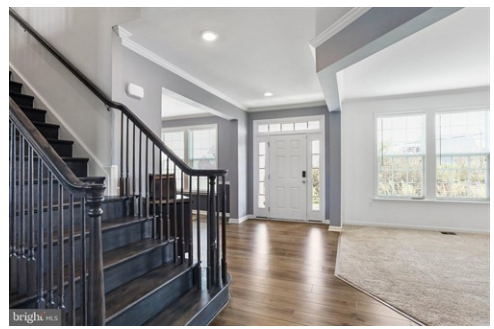




\$ 575,000



382 Pindar St, Gerrardstown, WV 25420

- » Beds: 5 | Baths: 2 Full
- » MLS #: WVBE2022012
- » Single Family | 3,879 ft<sup>2</sup> | Lot: 16,117 ft<sup>2</sup>
- » More Info: [382PindarSt.IsForSale.com](http://382PindarSt.IsForSale.com)



Jennifer & Kerry Whitehead  
 Mannen Sosa  
 (304) 671-4599 (Kerry)  
 (304) 886-3248 (Jennifer)  
 (240) 461-2126 (Mannen)  
[jenniferwhitehead@premiermove.com](mailto:jenniferwhitehead@premiermove.com)  
<http://www.teamwhitehead.com>

Coldwell Banker Premier  
 115 Aikens Center  
 Suite 21  
 Martinsburg, WV 25404  
 (304) 886-3248

Beautiful and stately Colonial on lot with views of the mountain ridge. Desirable Springdale Farm subdivision Castlerock II model with 4 ft extension, Morning Room, and 4 ft extension Island. This home has five large bedrooms and a full, unfinished basement. You will not be lacking for space now or in the future. Work from home, homeschool, entertain, host? Everything is possible. Open floor plan, tasteful decor, immaculate. Owner Suite is truly an oasis, lovely views from the sitting area, large walk in closet and deluxe bath. The home is the sought after Castlerock II floor plan. Like new without the wait.

